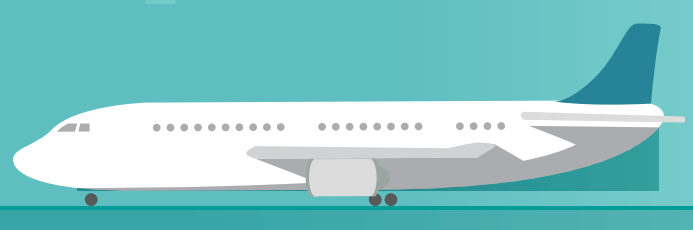
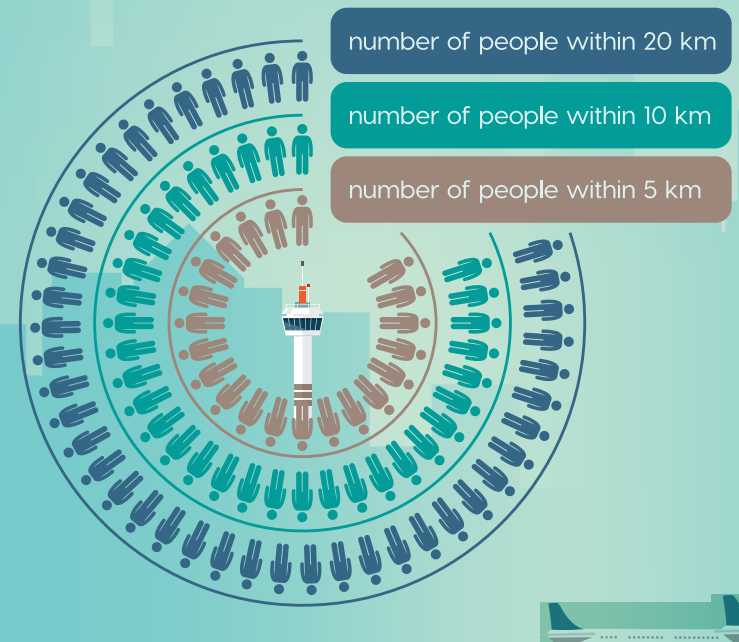
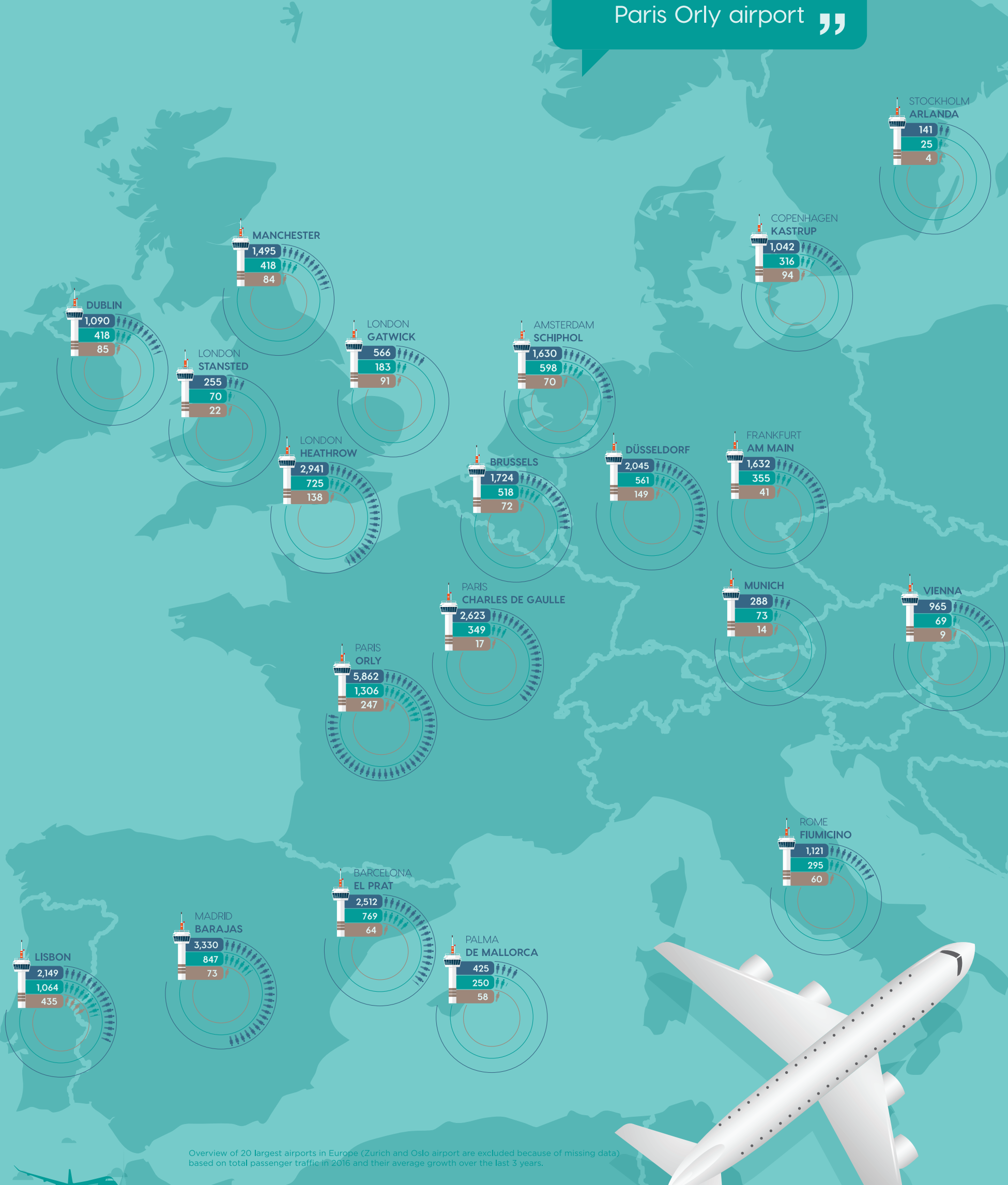


# POPULATIONS AFFECTED BY AIR TRAFFIC AROUND AIRPORTS

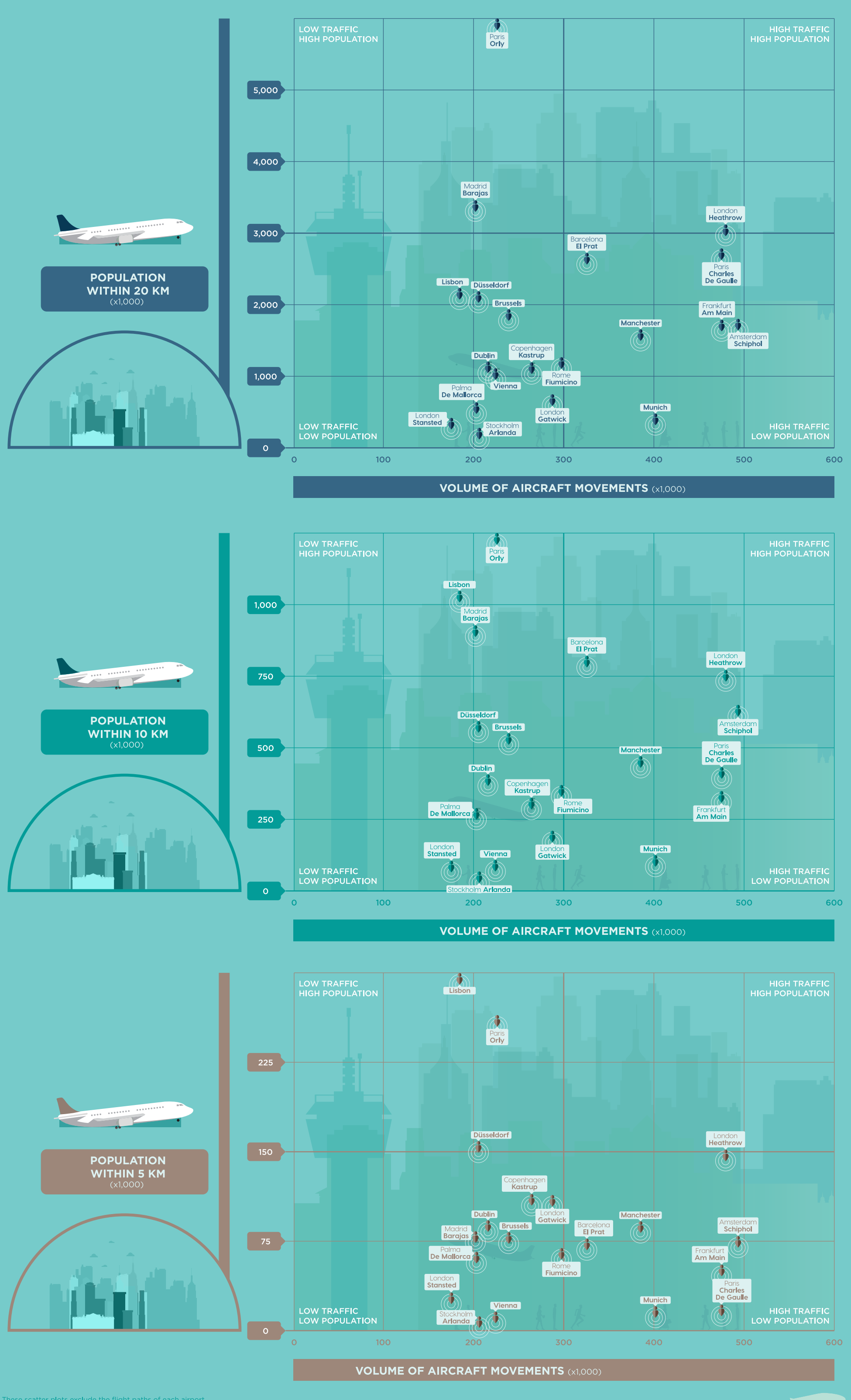


## POPULATION LIVING NEAR AIRPORTS (X 1,000)

“ Nearly 6M people live within a radius of 20 km from Paris Orly airport ”



## RATIO BETWEEN POPULATION NEARBY AIRPORTS AND AIRCRAFT MOVEMENTS

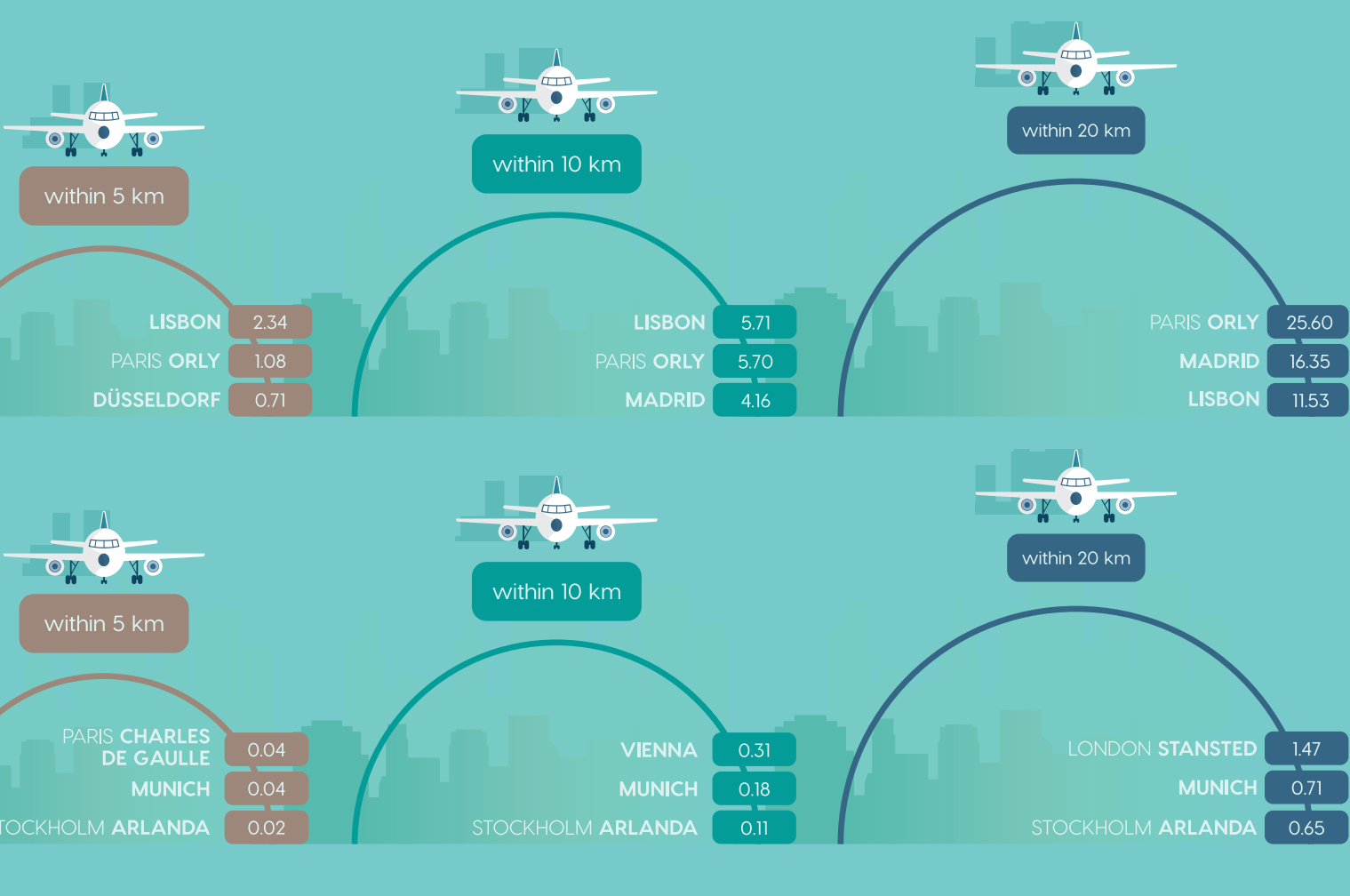


These scatter plots exclude the flight paths of each airport.

“ Which noise reduction measure to use depends on the population's distance from the airport. ”

## TOP 3 HIGHEST

## RATIO BETWEEN POPULATION NEARBY AIRPORTS AND AIRCRAFT MOVEMENTS



Source for aircraft movements (2016), CAPA centre for aviation. Source for population statistics (2013), Eurostat.